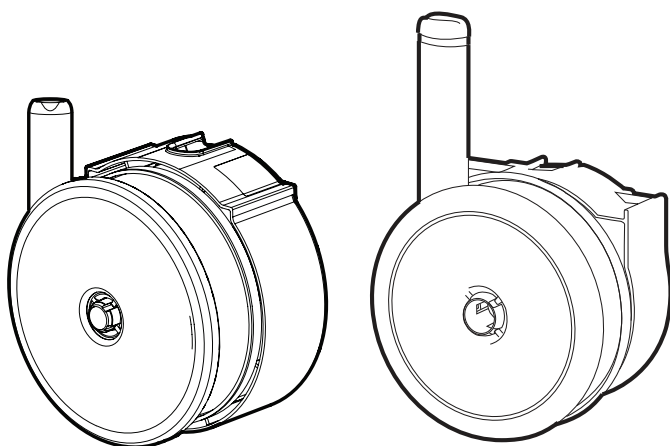


pūrleveTM

hygienic door handle



#1004 - #1005 PŪRLEVE HYGIENIC REFILL

Installation

Use with Hygienic Handle - #1001 and #1002

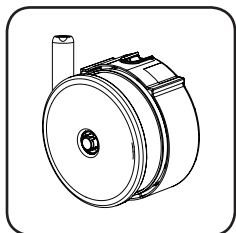


A cleaner world is within reach.

111 W. Olive Street, Glendale, WI 53212
1.877.PURLEVE | www.purleve.com

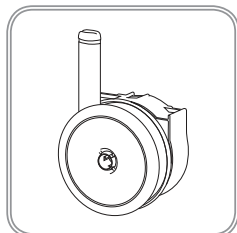
Pūrleve #1004 and #1005 Refill Part List

Included Parts (Qty. 2 of either #1004 or #1005 refill)



Pūrleve #1004 Refill

refer to images in **BLACK** squares



Pūrleve #1005 Refill

refer to images in **GREY** squares

Pūrleve Refill #1004 and #1005 Installation Instructions

Note 1: Installation video located at - www.purleve.com/installation-videos

Note 2: If no refill to be replaced, please go to step #2.

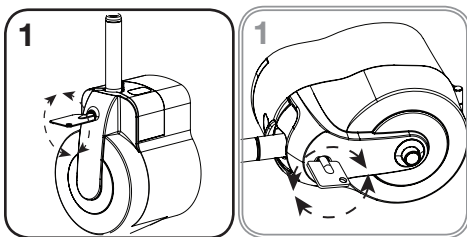
Note 3: If counting feature needed, when refill installed power on the system, push or pull the handle. As the sleeve advances, push the 'ARROW' button for 5 seconds or until the Green LED begins to blink, then release..

Note 4: The counting function for low refill only functions when a new and full refill is placed. The counting feature will not work if a less than full refill is used.

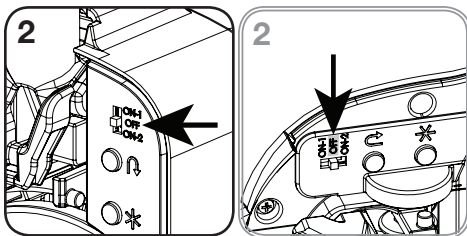
Note 5: Refill and Plastic Handle are recyclable. Please recycle.

1 PŪRLEVE HANDLE PREPARATION

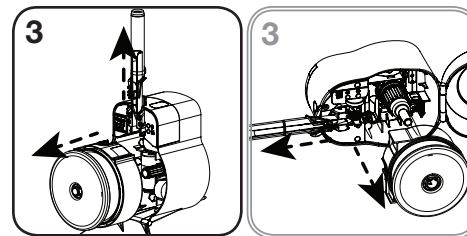
a Insert the Pūrleve key into cover lock, turn either direction and open cover (Figure 1).



b Place the switch to the 'OFF' position (Figure 2).

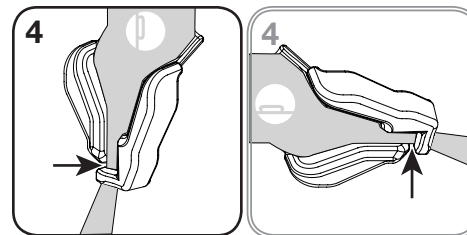


c Remove the empty/used refill from the dispenser and slide the plastic handle off the metal handle (Figure 3). Recycle all used refill parts.

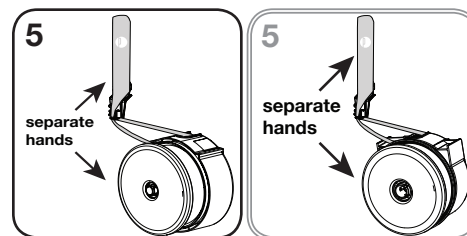


2 PREPARE PŪRLEVE HYGIENIC REFILL

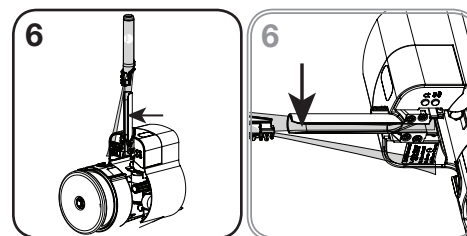
a Confirm that the new refill sleeve is woven through the bottom portion of the plastic handle (Figure 4).



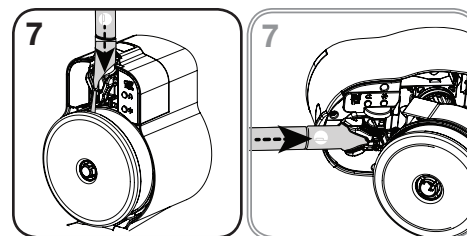
b Hold plastic handle in one hand and the refill in the other (Figure 5).



c Slide plastic handle with sleeve onto metal handle. Printed side of sleeve must face user. Ensure sleeve that is between the refill and the plastic handle is in the metal handle channel (Figure 6).



d Slide plastic handle over the metal handle until it stops (Figure 7). Ensure sleeve between plastic handle and cartridge remains taught.



2 PREPARE PŪRLEVE HYGIENIC REFILL (continued)

- e** Insert refill into dispenser. Refill fits dispenser in only one position. Line up plastic ribs of refill with dispenser (Figure 8).
- f** Check to ensure the Pūrleve logo is facing the user and that the sleeve has not begun to twist. If twisted, rotate the sleeve in the opposite direction of twist. Ensure the sleeve is woven underneath the bottom portion of the plastic handle (Figure 4).
- g** Turn the refill cartridge slowly by hand clockwise to ensure there is no binding of the sleeve (Figure 9).
- h** Turn on the Pūrleve Handle, 'On - 1' for infrared (IR) or 'On - 2' if IR is NOT required. Push or Pull the lever and release to advance the sleeve. Repeat until sleeve is tight and no binding or jamming exists (Figure 10).
- i** **See Note 3 and 4.** To activate the counting of sleeves function, push or pull the lever and release. As the sleeve advances, push the 'ARROW' button for 5 seconds or until the Green LED begins to blink, then release (Figure 11).
- j** Close the cover. Ensure you feel a positive 'close' and hear a snap. Check for any gaps around the cover and dispenser. Use the Pūrleve Key to ensure the lock is fully activated and gap removed.
- k** Pull or Push Down the Handle and Release. This will 'test' to ensure the sleeve advancement is functioning successfully.

